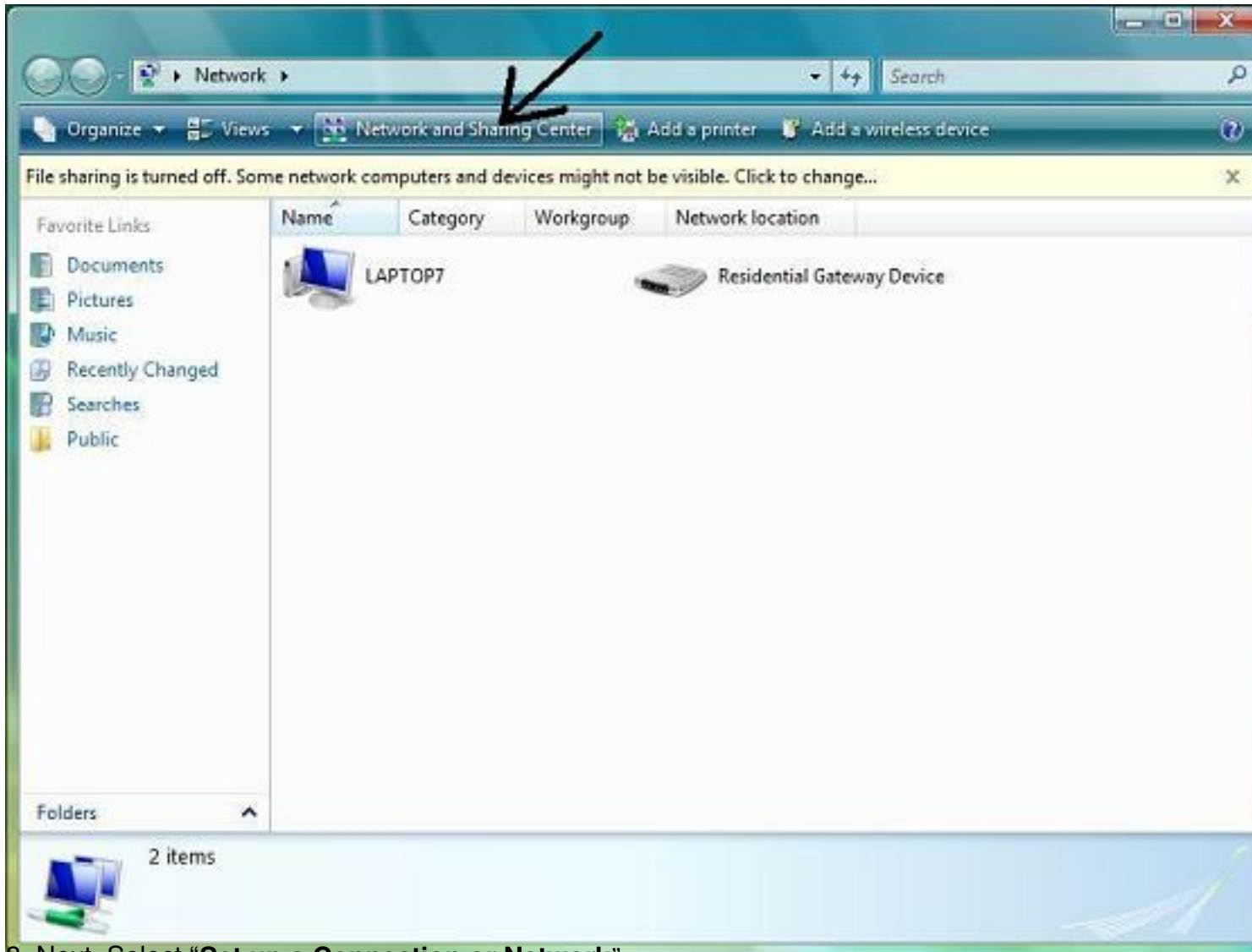


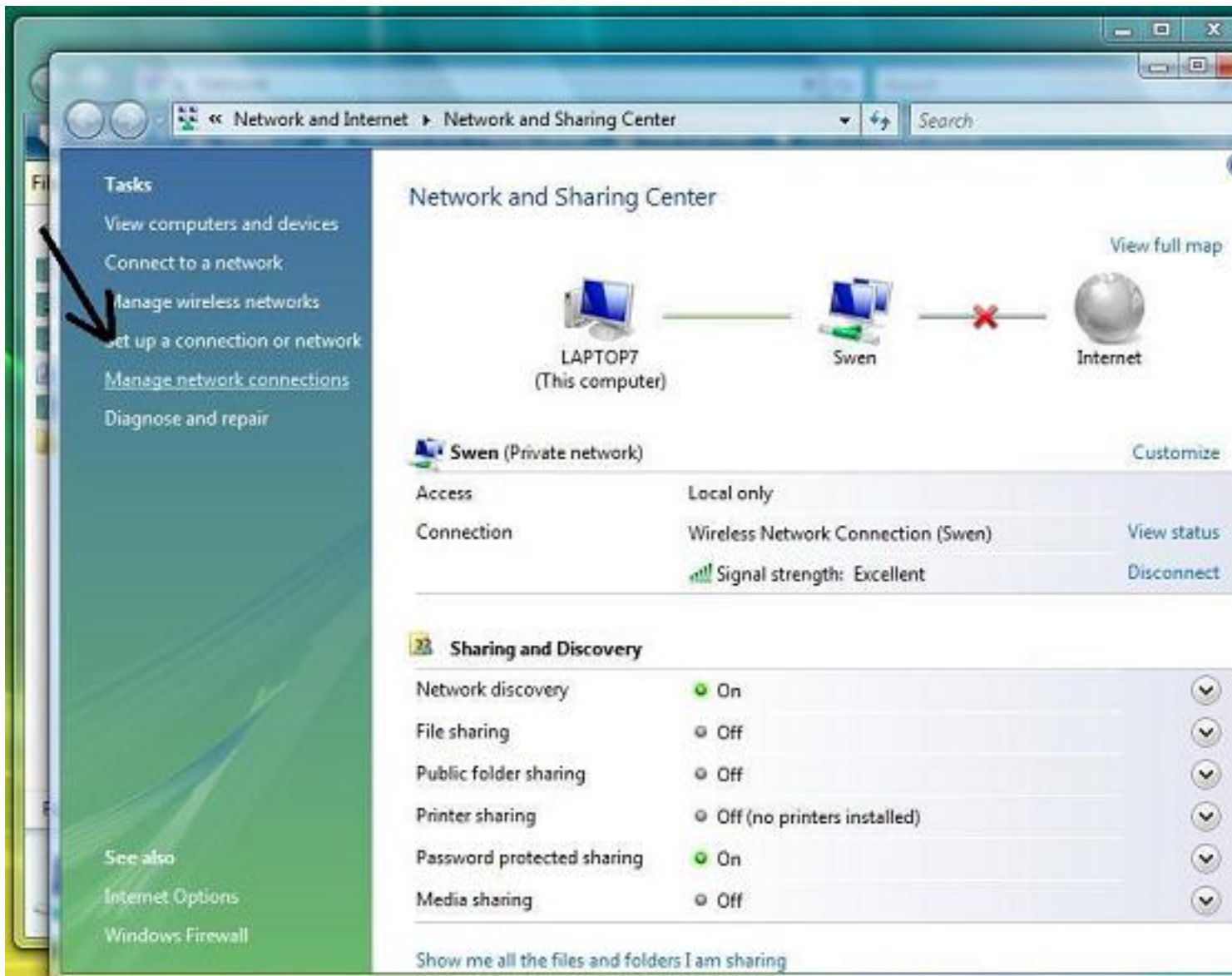
1. Click on the **Start** Button and then click on the **Network** option.



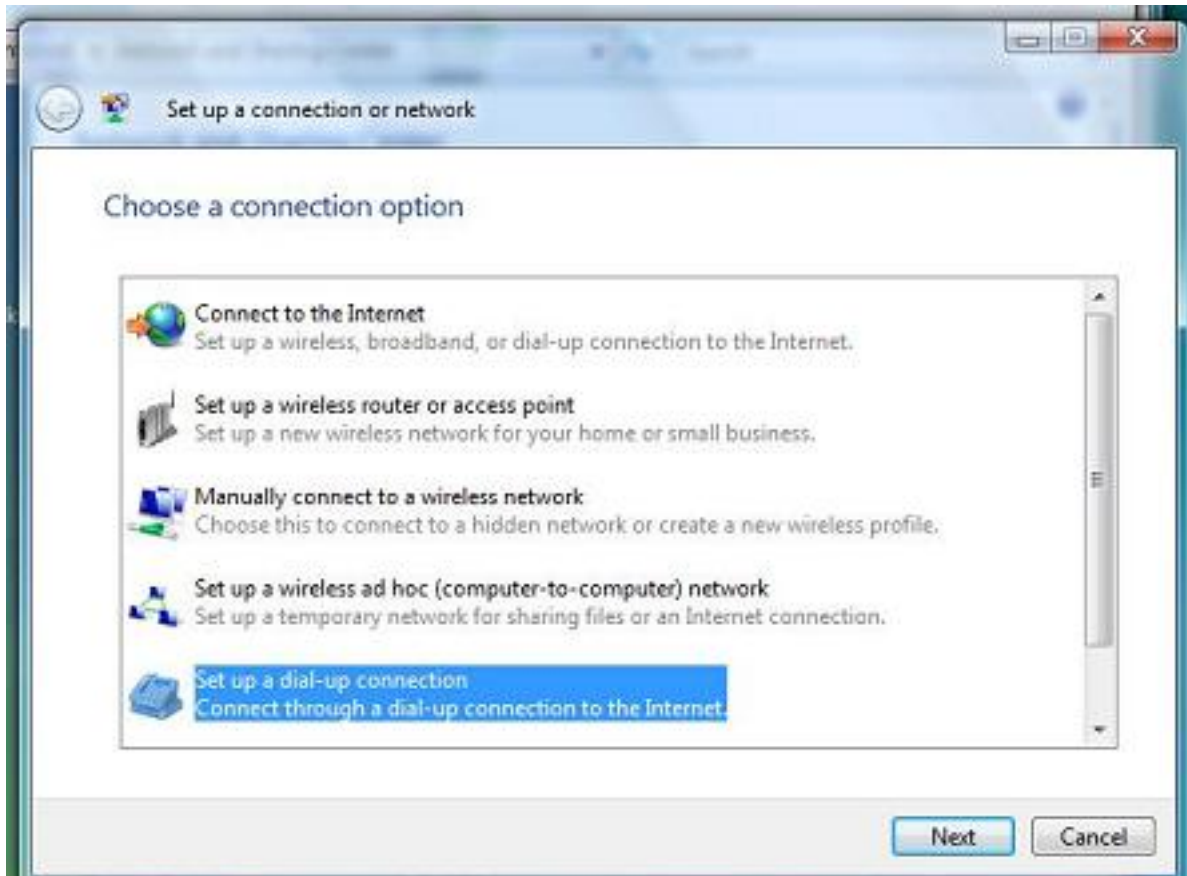
2. Select “**Network and Sharing Center** ” from the top of the screen.



3. Next, Select **“Set up a Connection or Network”**



4. Select **“Set up a dial-up connection”** from the menu options.



and a red box highlights the option also highlighted at the bottom of the selection list. One reviewer will see noise

